

Terminal Specifications	Model HL1120	Model HL1100
ESA Dimensions	L23.5 in x W32.6in x H4.4in	L23.5 in x W15.8in x H3.0in
ESA Weight	53 lbs.	27 lbs.
Peak Downlink Data Rate	195 Mbps	57 Mbps
Peak Uplink Data Rate	32 Mbps	14 Mbps
ESA Input DC Voltage	54.7 V DC (across 2 IFL cables)	54.7V DC (nominal)
DC Power Consumption	300W max (TBD)	170W max (TBD)

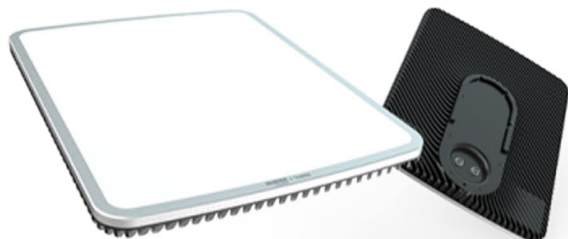
HUGHES LEO Terminal Specifications

Specifications	
Frequency Band	
TX	14.0 GHz to 14.5 GHz
RX	10.7 GHz to 12.7 GHz
Transmission Security	
Link Encryption	AES-256
GNSS	GPS + GLONASS

Environmental and Mechanical	
Operating Temperature	-40°C to +55°C
Indoor Power Supply	100 V to 240 V AC
IFL Cable Length	220 ft (max)
IFL Cable Type Dual	RG-6, 75Ω, F-type connector
Agency Compliance	CE, R&TTE, FCC, Anatel, UKCA
Safety Compliance	UL, CE, IEC

Network Configuration	
Network	OneWeb Satellite Constellation
Network features	IP, differentiated QoS, multi-APN
Wi-Fi	Wi-Fi 6 (optional)

Indoor Unit Specifications	
Indoor Unit Number	Model WR3210
GigE LAN Ports	2
External Power Supply	Included
Wi-Fi	Included



- ✉ sales@expeditioncommunications.com
- 🌐 www.expeditioncommunications.com
- ☎ +1 (877) 410 - 8101

